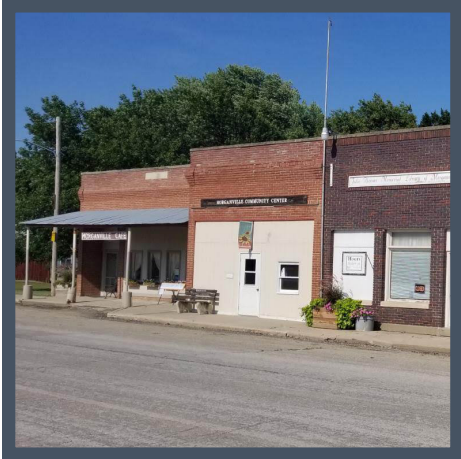


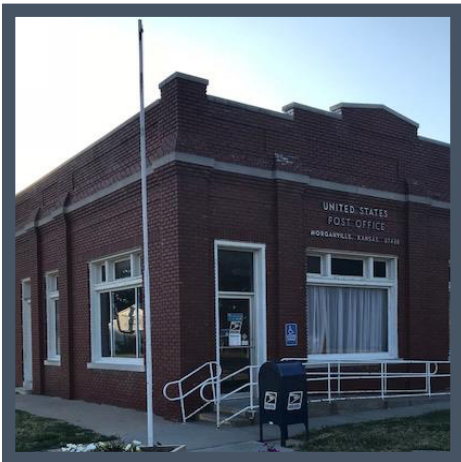
Flint Hills Communities to Call Home

Morganville

<https://www.claycountykansas.org/262/Morganville>



Within the city of Morganville is a busy Farmers Coop Elevator used by the local farming community and a post office for incoming and outgoing mail needs. There are three shops located on Main Street for shopping for antiques, refurbished home furnishings and handcrafted wood items. Also located along Main Street is the Julie Thomas Memorial Library with a wide variety of reading available for children and adults and Polly's Ceramic Shop that offers ceramic classes for any age. The local ballpark is busy with summer practices and games along with a snack shack with yummy treats.



Population

City: 187 people

Clay County: 8,371 people



Housing

Median Home Price: \$58,902

Median Rent: \$604/month



Distance to Regional Centers

Fort Riley: 47 miles or a 56 minute drive

Junction City: 47 miles or a 53 minute drive

Manhattan: 50 miles or a 57 minute drive





Childcare & Schools

Number of Preschool & Daycare options: 0

School District: USD 379

District Website: www.usd379.org

Elementary Schools: Lincoln Elementary School, Garfield Elementary

Middle Schools: Clay Center Middle School

High Schools: Clay Center High School

Are there Private School options? No



Retail & Dining

Number of Restaurants: 0

Number of Grocery Stores: 0

Number of Gas Stations: 0

Number of Retail Stores: 3



Services

Nearest Hospital: Clay County Medical Center, 12 miles away

Nearest Health Clinic: Clay County Medical Center, 12 miles away

Broadband Providers: Twin Valley

Religious Denominations: Methodist



Amenities

Number of Public Facilities: 1

Number of Parks: 1

Number of Trails: 0

Number of Golf Courses: 0

Number of Pools: 0



General

Sales Tax: 7.50%

Top 3 Employers:

USD 379

Fort Riley

Clay County

