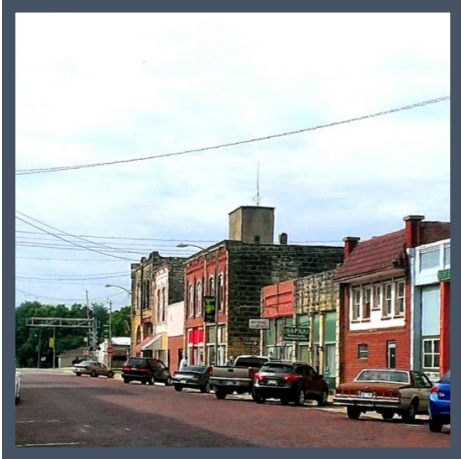


Flint Hills Communities to Call Home

Chapman

<http://chapmanks.com/>



The City of Chapman is a small community nestled in between Salina and Manhattan, Kansas. The city is conveniently located along the Smoky Hill River and Old U.S. 40. Junction City, Fort Riley, and Manhattan are within a short 35 minute drive. With year-round community events and activities, it is evident that this small community of 1,400 residents is full of spirit. The City of Chapman has three parks, but many residents can be found spending summers at the local pool. Chapman is a great place for the whole family with one high school, one middle school, and four elementary schools located nearby.



Population

City: 1,379 people

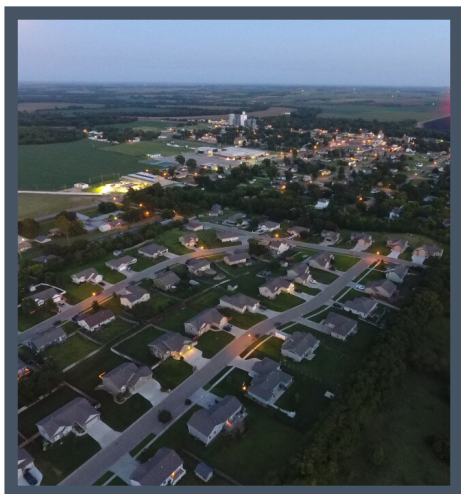
Dickinson County: 19,444 people



Housing

Median Home Price: \$135,369

Median Rent: \$827/month



Distance to Regional Centers

Fort Riley: 20 miles or a 29 minute drive

Junction City: 15 miles or a 17 minute drive

Manhattan: 32 miles or a 33 minute drive





Childcare & Schools

Number of Preschool & Daycare options: 0

School District: USD 473

District Website: www.usd473.net

Elementary Schools: Chapman Elementary, Rural Center Elementary, Blue Ridge Elementary, Enterprise Elementary

Middle Schools: Chapman Middle School

High Schools: Chapman High School

Are there Private School options? No



Retail & Dining

Number of Restaurants: 4

Number of Grocery Stores: 1

Number of Gas Stations: 1

Number of Retail Stores: 16



Services

Nearest Hospital: Abilene Hospital, 11 miles away

Nearest Health Professional or Clinic: Abilene Hospital, 11 miles away

Broadband Providers: Eagle Communications, AT&T, TCT, Twin Valley

Religious Denominations: Catholic, Methodist, Baptist, Nazarene



Amenities

Number of Public Facilities: 7

Number of Parks: 2

Number of Trails: 1

Number of Golf Courses: 1

Number of Pools: 1



General

Sales Tax: 9.0%

Top 3 Employers:

City of Chapman

USD 473

