

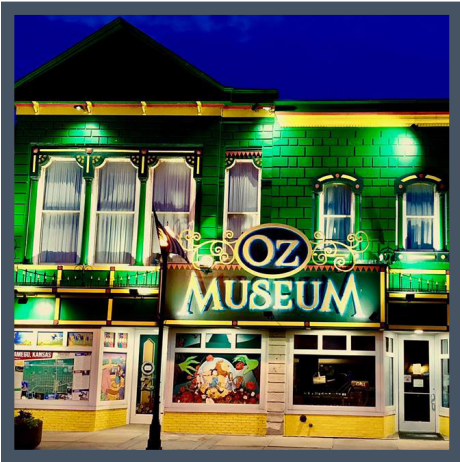
# Flint Hills Communities to Call Home

## Wamego

[www.wamego.org](http://www.wamego.org)



Wamego is a vibrant, progressive community nestled along the banks of the Kansas River. A beautiful downtown, historic landmarks, gorgeous City Park, Oz-themed attractions, and multiple festivals showcase Wamego's great community spirit, partnerships and citizen participation. Manufacturing forms the core of the Wamego economy. The area is bolstered by agriculture and value-added ag product development, regional retail and financial services, excellent health care and educational systems, and continually developing arts, entertainment and recreational attractions.



### Population

**City:** 4,703 people

**Pottawatomie County:** 23,908 people



### Housing

**Median Home Price:** \$159,572

**Median Rent:** \$725/month



### Distance to Regional Centers

**Fort Riley:** 32 miles or a 44 minute drive

**Junction City:** 40 miles or a 38 minute drive

**Manhattan:** 16 miles or a 22 minute drive





## Childcare & Schools

**Number of Preschool & Daycare options:** 2

**School District:** USD 320

**District Website:** [www.usd320.com](http://www.usd320.com)

**Elementary Schools:** Central Elementary School (K-2), West Elementary School (3-5)

**Middle Schools:** Wamego Middle School

**High Schools:** Wamego High School

**Are there Private School options?** No



## Retail & Dining

**Number of Restaurants:** 18

**Number of Grocery Stores:** 1

**Number of Gas Stations:** 3

**Number of Retail Stores:** 21



## Services

**Nearest Hospital:** Wamego Health Center, 1 mile away

**Nearest Health Clinic:** Wamego Health Center, 1 mile away

**Broadband Providers:** WTC, Cox, Hughes, Viasat, Level 3

**Religious Denominations:** Baptist, Methodist, Catholic, Latter Day Saints



## Amenities

**Number of Public Facilities:** 3

**Number of Parks:** 3

**Number of Trails:** 1

**Number of Golf Courses:** 1

**Number of Pools:** 1



## General

**Sales Tax:** 9.25%

**Top 3 Employers:**

Caterpillar, Inc.

USD 320

Wamego Health Center

