

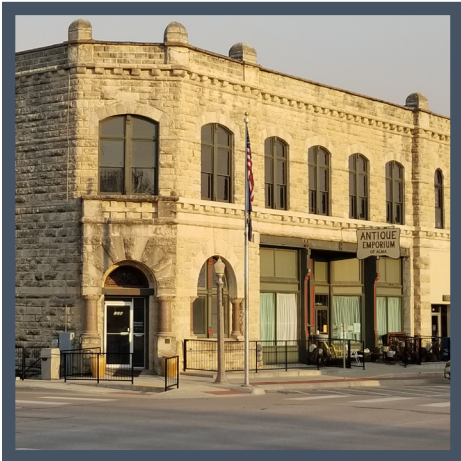
Flint Hills Communities to Call Home

Alma

<http://cityofalma-kansas.com>



Welcome to the City of Native Stone, Alma, a small community in the heart of the Flint Hills. We are a growing city and offer a great lifestyle for all ages. We have excellent opportunities for the outdoor life with abundant wildlife and recreation. We are a 40 mile drive to three lakes which offer camping, RV and tent, as well as fishing hiking and boating. Alma is part of the Scenic Mill Creek Drive and Native Stone Scenic Drive offering bucolic views of the rolling Flint Hills.



Population

City: 813 people

Wabaunsee County: 6,981 people



Housing

Median Home Price: \$97,778

Median Rent: \$647/month



Distance to Regional Centers

Fort Riley: 39 miles or a 44 minute drive

Junction City: 34 miles or a 32 minute drive

Manhattan: 27 miles or a 28 minute drive





Childcare & Schools

Number of Preschool & Daycare options: 2

School District: USD 329

District Website: www.usd329.com

Elementary Schools: Alma Elementary

Middle Schools: Paxico Middle School, Wabaunsee Junior High

High Schools: Wabaunsee High School

Are there Private School options? Yes



Retail & Dining

Number of Restaurants: 3

Number of Gas Stations: 2

Number of Grocery Stores: 1

Number of Retail Stores: 0



Services

Nearest Hospital: Wamego City Hospital, 15 miles away

Nearest Health Professional or Clinic: Wamego City Hospital, 15 miles away

Broadband Providers: Cenury Link, WTC

Religious Denominations: United Methodist, Lutheran, Baptist, Peace United



Amenities

Number of Public Facilities: 5

Number of Golf Courses: 0

Number of Parks: 3

Number of Pools: 1

Number of Trails: 1



General

Sales Tax: 9.0%

Top 3 Employers:

Alma Foods

City of Alma

Wabaunsee County

